

mEducation



MILLENNIUM@EDU  
sustainable education

Making a difference for 15 million students



## Millennium@EDU TeachScreen Solution Pack



## Millennium@EDU Tablet

The education tablet that stands by itself. Millennium@EDU 7" Tablet takes ergonomics to a whole new level, with a built-in stand cover for improved user experience. Made to be mobile, featuring a thin and light design, the Millennium@EDU 7" Tablet is the ideal device for children to take everywhere.

### GROUNDBREAKING DESIGN

• **ONE TABLET. TWO MODES.**

Students can scroll through content, reading, browsing and playing in Tablet Mode. Switching to Stand Mode, everything they watch, play and listen gets more enjoyable and fun.



• **SLENDER AND LIGHT**

Millennium@EDU Tablet is extremely lightweight and very tiny in size. Designed to fit naturally a child's hand, it is very comfortable to be carried and handled by children, as well as to slip into a trolley or a backpack.



• **KID-FRIENDLY**

Based on round edges, with no sharp corners, Millennium@EDU Tablet increases the protection of children from all angles.

• **SMART COVER**

Featuring a sleek, exclusive design, the smart cover allows for convenient handling, whether in Stand Mode or Tablet Mode, while providing further protection for the device.



• **ROBUST AND SAFE**

Millennium@EDU Tablet is resistant to possible drops, as well as to dust and water spill.



### MAXIMIZED EXPERIENCE

• **7" TOUCHSCREEN**

Millennium@EDU Tablet features a multi-touch 7" capacitive screen, without compromising the delivery of stunning high definition visuals.



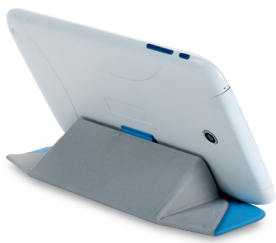
• **DUAL WEBCAM**

The 2.0M rear and 0.3M front cameras let students take high-definition pictures and enjoy clear video chats. Peer-to-peer learning becomes more engaging and fun!

• **MICRO-USB ON-THE-GO**

Enables students to reverse the normal micro-USB connection from the tablet to another device, so Millennium@EDU Tablet can charge phones and mp3 players. Obviously, it also charges itself.





### • CONNECTIVITY

Full-time access to online educational assets is guaranteed with 802.11b/g/n WiFi and Bluetooth® 2.1+EDR.

### • LONG BATTERY LIFE

Students go longer and do more while working with **Millennium@EDU Tablet**. Stellar battery life allows to gain time and possibilities in learning.

## MORE LEARNING POSSIBILITIES



### • MICRO LENS\*

Featuring a snap-on magnification lens, the webcam also works as a microscope for scientific assignments.

### • THERMAL PROBE READY\*

The Thermal Probe detects fluctuations in ambient temperatures, transferring the data received to the software platform via audio jack.



## SOFTWARE

### • ANDROID™ JELLY BEAN 4.2.2

Fast, fluid and smooth, Android™ Jelly Bean 4.2.2 brings a completely new camera experience, a new form of typing and a set of innovative features and apps for the best performance in learning.

### • EDUCATION SOFTWARE\*\*

**Millennium@EDU Tablet** provides a specialized software solution for personalized learning, classroom and IT management. It features a complete range of resources and apps to engage students and promote collaboration between them.



E-reader



Education Lab Camera



Data analysis



Note-taking app



Stylus app



Education Media Camera



Digital Art Tool



E-learning



Antivirus

\* optional accessory  
\*\* under certification

## Technical specifications

<b>OS &amp; Software</b>	Android 4.2.2 Jelly Bean	<b>Connectivity</b>	802.11b/g/n wifi + BT 2.1+EDR
<b>CPU</b>	Intel® Atom Dual Core Clover Trail + Z2520 1.2GHz	<b>I/O</b>	1x Micro USB 1x Micro SD Card slot (up to 32GB) 1x Combo Audio Jack (Thermal probe ready)
<b>Display</b>	7" LCD 1024 x 600 TN 200 nits w/ Capacitive Multi Touch	<b>Battery</b>	Li-Polymer 3 Cell 3000mAh *TBD
<b>Camera</b>	0.3 MP Front 2.0 MP Rear	<b>Sensors</b>	G-sensor
<b>Memory</b>	1 GB LPDDR2 2 GB LPDDR2 (optional)	<b>Dimensions (W) x (D) x (H)</b>	200 x 124 x 11.425 mm
<b>Storage</b>	8 GB eMMC	<b>Accessories</b>	Micro Lens, up to 30x (optional) Thermal probe sensor (optional)

A SOLUTION BY ECS - BELIEVE TO ACHIEVE



ECS, the Elitegroup Computer Systems, was established in 1967, and almost 30 years of business. ECS is strongly committed to develop cutting-edge technology in order to generate innovative products under environmental friendly designs. ECS comprehensive system of quality control provides our clients with reassurance and fosters long term cooperation.

Elitegroup Computer Systems Co., LTD. +886 22162 1177 Ext. 56707 Email: Elsie.lee@ecs.com.tw www.ecs.com.tw